



## WHITFORD CATHOLIC PRIMARY SCHOOL PARENTS' & FRIENDS' ASSOCIATION



**SAVE THE DATE  
SCHOOL FETE  
SATURDAY 5<sup>TH</sup> NOVEMBER**

**FUNDRAISING THERMOMETER  
FOR 2016**



Dear Parents and Friends of our School Community

Welcome back to the last term of the year. We hope everyone is refreshed and ready to enjoy this busy time of the year.

### THANK YOU

The P&F Committee would like to thank all those who came to help at the busy bee. All wooden play equipment was repainted and repaired, sand and mulch moved around the school gardens and play areas, lots of plants potted for the school fete and the Pre Primary playground upgraded with the construction of a new deck, terraced area and stepping logs installed.

A wonderful effort by all involved!

### SCHOOL FETE

It has been another great year for the P&F, with our most anticipated event, the school fete, to be held in four weeks. It would be great to see everyone there. So come and have some fun and support our school.

#### Volunteering Opportunities:

An event such as the fete is not successful without the support and help from all in the school community.

**Helpers will be required during the day. If you are able to help on the day please contact your Class Teacher as each class has been allocated an attraction to manage at the fete. Alternatively, lists are located outside each classroom for you**

to put your name down on a timeslot.

If you are able to help beforehand, please let one of the P&F Committee members know.

#### DONATIONS

Donations of lollies, bars of chocolates (any size), a bottle of something, old crockery and pre loved soft toys are still being sought for the various stalls on the night. Please place donations in the baskets provided in each classroom.

## MAJOR UPCOMING EVENTS

### Term 4

#### October

**Wednesday 19<sup>th</sup>** - P&F Meeting

#### November

**Saturday 5<sup>th</sup>** - School Fete

**Tuesday 29<sup>th</sup>** – ACM Meeting

### Contact Us

**Whitford Catholic Primary School  
P&F Association**

**Email:** [pandf@wcps.wa.edu.au](mailto:pandf@wcps.wa.edu.au)

**Newsletter:**

<http://www.whitfordcatholicps.wa.edu.au/p-f-newsletter-events>

Items for the White Elephant Stall and the Book Stall are also being sought. Just contact the P&F via email to arrange drop off of any donations you may have.

### SPONSORSHIP OF ATTRACTIONS

If you would like to sponsor an attraction or game at the fete it is not too late. You can contact Pina on 0408 350 332 for details.

### BUSINESS EXPO

If you have a business and would like a stall or know of someone who would like to show and sell their products please contact the P&F on [pandf@wcps.wa.edu.au](mailto:pandf@wcps.wa.edu.au). The cost of a business stall will be \$70 **plus** a donation of product that can be used as a prize for the chocolate wheel.

Look out for flyers regarding donation requests or contact us.

### DISBURSEMENTS OF FUNDS

No additional funds have been disbursed this month.

### PAVING FUNDRAISER

A big thank you to all the families who supported this fundraiser. Over 150 pavers were ordered. These will be integrated with the new pavers around the new building. They will be a lasting reminder of each family's time at our wonderful school.

## Cadbury Chocolate Fundraiser

**All monies were due back by Friday 29<sup>th</sup> July 2016.** If you haven't already done so, please return any money or any unsold chocolates asap.

## OTHER WAYS YOU CAN SUPPORT OUR SCHOOL

Earlier this year the P&F was approached by three businesses who offered to support the P&F and school community via their businesses. Supporting these businesses is another way you are able to support our school. Please see the flyer below for these opportunities and contact details for each.

Their support is appreciated and it is recommended that you seek your own independent advice when engaging any new business.



# Save money on your loan and help our school.

I can help you potentially save money on your new or existing home or investment loan. I'll also give a rebate of \$500 for every loan settled\* to Whitfords Catholic Primary School to help our kids. I'll do most of the legwork for you, completing mountains of paperwork on your behalf, leaving you to simply review and sign.



Call me today to find the right loan for you or to just discuss options!

**Alyson Irwin, Senior Finance Specialist**

**M:** 0401 405 465 | **P:** 08 9407 9566

**W:** <http://www.loanmarket.com.au/alyson-irwin>

**E:** [alyson.irwin@loanmarket.com.au](mailto:alyson.irwin@loanmarket.com.au)



\* Terms, conditions and normal lending criteria apply. Valid for loans settled over \$250,000. For loans under \$250,000 a rebate of \$250 will be paid to Whitfords Catholic Primary School P&F. Offer valid from 01/06/2016 until 31/12/2016.

Loan Market Pty Ltd | Australian Credit Licence 390222  
If you'd prefer not to receive marketing messages from me, no problem, just email or call me.



# \$1000

Donated to WCPS P&F for any referred houses built.



Dion Dagostino

0438 235 110

[DionDagostino@redinkhomes.com.au](mailto:DionDagostino@redinkhomes.com.au)

**Paul & Nicole McConnon – Realmark Whitfords 0415 541 973**



## \$1,000 TO WCPS P&F FOR EVERY REFERRED PROPERTY SOLD!

Together we can help raise essential funds for WCPS P&F!

How does it work???

Simply let us SELL your property or refer us to a friend or family member.

We will donate \$1,000 from our Professional Fee to the P&F when the property is successfully Settled ☺

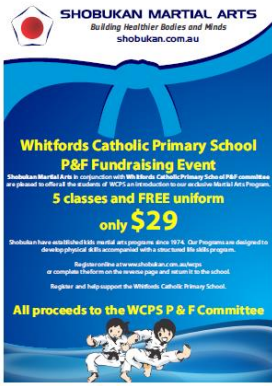


### About us

With nearly 30 years experience in property sales between us we can provide you with expert advice on selling in this challenging market!

Please call us NOW on 0415 541 973 for a FREE NO OBLIGATION APPRAISAL.

## \$1,000 TO WCPS P&F FOR EVERY REFERRED PROPERTY SOLD!



Shobukan Martial Arts are offering all WCPS students **5 classes plus a FREE uniform for only \$29.**

All proceeds go directly to WCPS P&F Association.

Shobukan has centres at Whitfords, Wangara and Joondalup.

You can register online <http://shobukan.com.au/wcps/>

Or complete the back of the flyer that will come home this week.

Any queries please speak to Nadine.

---

## More Important News

### Agenda Items for Monthly P&F Meetings

Prior to each monthly meeting, the P&F will call for any agenda items that the school community wishes to be discussed. Parents who are passionate about helping to build a strong parent community at our School are encouraged to attend these meetings. If you are unable to attend please provide a committee member with details of any issues you would like raised.

Please feel free to contact any member of the P&F Executive Committee if we can help. We look forward to continuing to work with you all and as fellow members of this great community and would like to thank you for your ongoing support.

The next P&F meeting will be on Wednesday 19<sup>TH</sup> October 7:30pm. Meetings are held in the staff room.

All are welcome.

Kind Regards

The Whifford Catholic Primary School P&F Committee