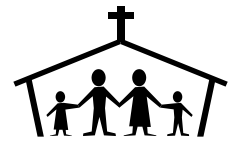




WHITFORD CATHOLIC PRIMARY SCHOOL PARENTS' & FRIENDS' ASSOCIATION




**SAVE THE DATE
SCHOOL FETE
SATURDAY 5TH NOVEMBER**

**FUNDRAISING THERMOMETER
FOR 2016**



Dear Parents and Friends of our School Community

It is hard to believe that we are half way through the year. What a great start we have had. The involvement from the school community has been wonderful and it is great to continually see new faces at our P&F Meetings.

THANK YOU

Lapathon

We have now finalised the Lapathon and this year it was another record. Our net income from this fundraiser was **\$12,938.65**. A big thank you to all the students, families and staff who continue to support this event. We hope all the winners enjoy their prizes over the holidays.

Disco

We had so many little groovers at the school disco on Friday night. For the first time we trialed a ticketing system which we may use again for future events. This event raised **\$3,475.78** for our school. This would not have been possible without the many volunteers that helped set up the hall, cook and help at both the junior and senior discos. Also a big thank you to the students for their wonderful behaviour. It makes the event enjoyable for all.

P&F Meeting

Again it was great to see some new faces at the P&F meeting. It is a great way for you to see what goes into making this a vibrant school community and to share your ideas. Save the date for our next meeting, Wednesday 20th July at 7:30pm.

DISBURSEMENTS OF FUNDS

No additional funds have been disbursed this month.

MAJOR UPCOMING EVENTS

Term 3

TBA –Brick Paving Fundraiser

TBA – Father's Day Stall

Term 4

November

Saturday 5th - School Fete

TBA – Movie on the Green (Free event)

Contact Us

**Whitford Catholic Primary School
P&F Association**

Email: pandf@wcps.wa.edu.au

Newsletter:

<http://www.whitfordcatholicps.wa.edu.au/p-f-newsletter-events>

EVENTS

SCHOOL FETE

Preparations are now underway for the school fete. This year it will be a day fete on Saturday 5th November with a **COUNTRY FAIR** theme.

If you have a business and would like a stall or know of someone who would like to show and sell their products please contact the P&F on pandf@wcps.wa.edu.au The cost of a business stall will be \$70 **plus** a donation of product that can be used as a prize for the chocolate wheel.

Also, some of the stalls we are having include White Elephant (Trash and Treasure), book stall, chocolate wheel, plant stall, cakes/preserves/jam stall, craft stall. Donations requests for these stall will be sent out next term. Donations are voluntary, but they all help make the fete a success.

The holidays may be great opportunity for you to sort through donations for our White Elephant Stall. Please ensure that no broken items are donated – we would prefer more treasure than trash!! If you have any donations please contact the P&F via our email and we will endeavour to come and collect the items from you (save you bringing them to school).

Cadbury Chocolate Fundraiser

The Cadbury Chocolate boxes went out this week. These are worth \$50 (of which the P&F makes \$20). All monies are due back by Friday 29th July 2016. Please see the note inside the box for the various ways you are able to make payment. Should you have any queries please contact Lisa on 0438317561.

Entertainment Books

Entertainment books were sent home 19th May. If you haven't already done so, please return either your payment (or payment confirmation details) or any unwanted Entertainment Books back to the school office asap. Any queries please contact Ines on 0448 800 471.

OTHER WAYS YOU CAN SUPPORT OUR SCHOOL

Earlier this year the P&F was approached by three businesses who offered to support the P&F and school community via their businesses. Supporting these businesses is another way you are able to support our school. Please see the flyer below for these opportunities and contact details for each. Their support is appreciated and it is recommended that you seek your own independent advice when engaging any new business.

Save money on your loan and help our school.

I can help you potentially save money on your new or existing home or investment loan. I'll also give a rebate of \$500 for every loan settled* to Whitfords Catholic Primary School to help our kids.
I'll do most of the legwork for you, completing mountains of paperwork on your behalf, leaving you to simply review and sign.



Call me today to find the right loan for you or to just discuss options!

Alyson Irwin, Senior Finance Specialist
M: 0401 405 465 | **P:** 08 9407 9566
W: <http://www.loanmarket.com.au/alyson-irwin>
E: alyson.irwin@loanmarket.com.au



* Terms, conditions and normal lending criteria apply. Valid for loans settled over \$250,000. For loans under \$250,000 a rebate of \$250 will be paid to Whitfords Catholic Primary School P&F. Offer valid from 01/06/2016 until 31/12/2016.

Loan Market Pty Ltd | Australian Credit Licence 390222
 If you'd prefer not to receive marketing messages from me, no problem, just email or call me.



- All custom designs
- Kalbarri to Margaret River
- Investment or home
- House & land packages



\$1000

Donated to WCPS P&F
for any referred houses built.



Dion Dagostino
 0438 235 110
DionDagostino@redinkhomes.com.au

Paul & Nicole McConnon – Realmark Whitfords 0415 541 973



\$1,000 TO WCPS P&F FOR EVERY REFERRED PROPERTY SOLD!

Together we can help raise essential funds for WCPS P&F!

How does it work???

Simply let us SELL your property or refer us to a friend or family member.

We will donate \$1,000 from our Professional Fee to the P&F when the property is successfully Settled ☺

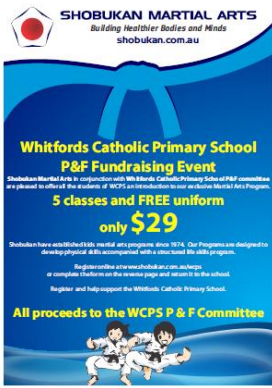


About us

With nearly 30 years experience in property sales between us we can provide you with expert advice on selling in this challenging market!

Please call us NOW on 0415 541 973 for a FREE NO OBLIGATION APPRAISAL.

\$1,000 TO WCPS P&F FOR EVERY REFERRED PROPERTY SOLD!



Shobukan Martial Arts are offering all WCPS students **5 classes plus a FREE uniform for only \$29.**

All proceeds go directly to WCPS P&F Association.

Shobukan has centres at Whitfords, Wangara and Joondalup.

You can register online <http://shobukan.com.au/wcps/>

Or complete the back of the flyer that will come home this week.

Any queries please speak to Nadine.

More Important News

Agenda Items for Monthly P&F Meetings

Prior to each monthly meeting, the P&F will call for any agenda items that the school community wishes to be discussed. Parents who are passionate about helping to build a strong parent community at our School are encouraged to attend these meetings. If you are unable to attend please provide a committee member with details of any issues you would like raised.

Thank you for your support and we look forward to seeing you at some of the upcoming events.

The next P&F meeting will be on Wednesday, 20th July at 7:30pm. Meetings are held in the staff room.

All are welcome.

Kind Regards

The Whitford Catholic Primary School P&F Committee