



WHITFORD CATHOLIC PRIMARY SCHOOL PARENTS' & FRIENDS' ASSOCIATION



**SAVE THE DATE
LAPATHON
WEDNESDAY 4TH MAY**

**FUNDRAISING THERMOMETER
FOR 2016**



Dear Parents and Friends of our School Community

What a busy first term we have had. We would like to thank the school community for their continued support for the events and initiatives run by the P&F Committee. These would not have been successful without your support and input.

We also take this opportunity to wish everyone a happy and holy Easter and a safe and restful holiday.

THANK YOU

Dad's Camp Out

Firstly a **BIG THANK YOU** to **Chris Pawle** and **Andrew Dunlop** for organising and running the Dad's Camp Out. The 71 families who attended had a fantastic time and we are sure this will become an annual event. Thank you also to the dad's who helped out at the event. Even though this was not a fundraising event it still raised \$576.90 which will go towards our pledges for the year.

P&F Meeting

It was wonderful to see so many people attend the P&F meeting last week. The ideas that were shared and the enthusiasm that was brought to the meeting was refreshing. The P&F has agreed to hold one meeting per term in the morning, so if you're unable to attend a night meeting please come to a morning meeting.

Easter Egg Raffle

Thank you to all those families who purchased tickets for the Easter egg raffle, donated eggs or helped with the wrapping. It was our biggest one yet, with \$1,784.80 raised and 248 prizes wrapped. Some very happy children left the raffle draw yesterday.

PLEDGES FOR 2016

At last week's meeting, the P&F Committee voted to pledge funds for the following in 2016:

1. \$ **800** for the free fresh fruit available to students on canteen days;

MAJOR UPCOMING EVENTS

Term 2

May

4th - Lapathon

4th and 5th - Mother's Day Stall

TBA - Entertainment Book

22nd - HBF Run for a Reason

June

24th - School Disco

TBA – Cadbury Chocolate
Fundraiser

Term 3

TBA – First Aid Kit Fundraiser

TBA – Father's Day Stall

Term 4

TBA - School Fete

Contact Us

**Whitford Catholic Primary School
P&F Association**

Email: pandf@wcps.wa.edu.au

Newsletter:

<http://www.whitfordcatholicps.wa.edu.au/p-f-newsletter-events>

2. **\$13,000** for the annual pledge of \$500 per class from Pre Kindy to Year 6. Teachers can spend this for their own class or combine it with other classes in their grade area. This year we have included a pledge for the Science Department and the Drama/Dance Department;

3. **\$30,000** for new reading books across the grades as well as a reading intervention program across the whole school; and

4. **\$ 300** for chess sets for the new Chess Club.

That's a total of \$44,100

GIVE 10 PROGRAM

In response to your feedback, the P&F Executive will endeavor to communicate the volunteering opportunities to the community more effectively. With this in mind, the P&F will:

- Create a 'Give 10 Helping Hands' community notice board (currently located behind the gate at the entrance to the school);

- Notify the community of any upcoming volunteering opportunities via the official school Facebook page:

<https://www.facebook.com/Whitford-Catholic-Primary-School-252310421552213/>

- List opportunities in the weekly School Newsletter and in the monthly P&F Newsletter.

VOLUNTEERING OPPORTUNITIES

We are currently looking for 4 volunteers to prepare the Lapathon envelopes ready to be issued in the last week of Term One. This involves gluing and stapling.

We also need some envelopes stamped and then raffle tickets stapled to them for an upcoming raffle.

These jobs can be done at home so if you are interested please contact the P&F Committee on pandf@wcps.wa.edu.au

ONLY 6 VOLUNTEERS WILL BE NEEDED FOR THESE, BUT THERE WILL BE MORE OPPORTUNITIES TO DO THINGS AT HOME SO LOOK OUT FOR THESE IN FUTURE NEWSLETTERS.

EVENTS

WCPS ANNUAL LAP-A-THON

The lap-a-thon is scheduled for Wednesday 4th May from 1:30-2:30pm. Parents are welcome to come and watch or join in with their little ones! This is the biggest fundraiser on the school calendar.

This year money raised from this event will be going towards the P&F commitment to provide funding for new reading books across the grades and the reading intervention program across the school. All our children will benefit directly from this fundraiser.

Sponsorship envelopes will be sent out the last week of this term.

There are great prizes for most laps (1 x boy & girl for each class) as well as prizes for the largest fundraiser in each class. In addition, there are 2 new prize categories:

- Each child who returns their envelope with donations will go in the draw to be **MR D'ADAMO'S ASSISTANT FOR THE DAY**; and
- The first class to have **all** envelopes returned (even those with no donations) will win a prize. Posters will be made for each class so that children can encourage each other to get their envelopes back.

To be in the running for the largest fundraiser of your class and Mr D'Adamo's assistant for a day, Lapathon envelopes must be returned by Wednesday 26th May. Once the envelope has been returned, the student will be given an icy pole voucher that can be redeemed at the end of that week.

HBF RUN FOR A REASON

Our school team has been set up – **Whifford Catholic Primary School – Whiffords Rapids.**

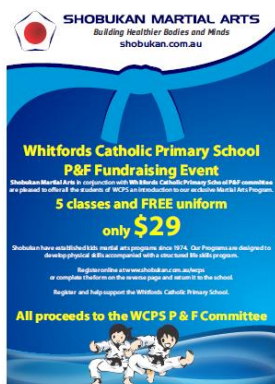
When registering, select our school team.

Last year we won largest school team, with the prize money of \$1,000 being used to purchase sports equipment for junior school sporting equipment. So get on board, tell all your family and friends to join our team - we would love to win the largest school team again.

When ordering your tops you can elect to "Collect" instead of postage. We will be going to collect the tops on the team's behalf and will hand them out leading up to the race.

If you have any queries please contact either Mr D'Adamo or Pina on 0408 350 332

SHOBUKAN MARTIAL ARTS



Shobukan Martial Arts are offering all WCPS students **5 classes plus a FREE uniform for only \$29.**

All proceeds go directly to WCPS P&F Association.

Shobukan has centres at Whitfords, Wangara and Joondalup.

You can register online <http://shobukan.com.au/wcps/>

Or complete the back of the flyer that will come home this week.

Any queries please speak to Nadine.

More Important News

Agenda Items for Monthly P&F Meetings

Prior to each monthly meeting, the P&F will call for any agenda items that the school community wishes to be discussed. Parents who are passionate about helping to build a strong parent community at our school are encouraged to attend these meetings. If you are unable to attend please provide a committee member with details of any issues you would like raised.

Thank you for your support and we look forward to seeing you at some of the upcoming events.

The next P&F meeting will be on Wednesday, 18TH May at 9am. Meetings are held in the staff room.

All are welcome.

Kind Regards

The Whitford Catholic Primary School P&F Committee