



WHITFORD CATHOLIC PRIMARY SCHOOL
PARENTS' & FRIENDS' ASSOCIATION



Dear Parents and Friends of our School Community

Welcome back from your holidays. We hope you are all rested as we have a very busy term ahead!

Firstly, thank you to all those who supported or helped at our Easter Egg raffle. It was the most prizes we have ever had. A net amount of \$1,696.17 was raised.

Our first Grand Cinema holiday group movie booking also made a profit of \$417.50. Over 100 tickets were sold to this event and one that we will most probably do each holidays. More information closer to the next holidays.

So far, a net amount of \$4,892.48 has been raised this year. Funds will be distributed once enough has been raised for our current pledges for 2015.

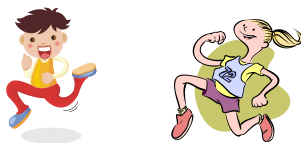
Reminders

Don't forget the following upcoming events/fundraising :

- **Mother's Day Stall and Raffle** – purchases can be made 6th and 7th May. Raffle tickets available every morning until 8th May. (see below).
- **Entertainment Books** – opt out forms need to be returned by 8th May. Books will be sent home 14th May.
- **Vincent's Project for the Homeless** – packing date is now Friday 22nd May. See below for more details
- **HBF Run for a Reason – Nate's Mates** – you can join the school team or make a donation (see below).

EVENTS

WCPS ANNUAL LAP-A-THON



24th May 2015

Join our school team in support of Nate's Mates.

Fundraising Thermometer for 2015



Major Upcoming Events

Term 2

30th April – Lapathon

06th & 7th May – Mother's Day Stall

14th May – Entertainment Book

22nd May – Packing Day (Homeless Project)

24th May - HBF Run for a Reason – Nate's Mates

26th June – School Disco

The lap-a-thon is scheduled for this Thursday, 30th April from 1:15-2:45pm. Parents are welcome to come and watch or join in with their little ones! This is the biggest fundraiser on the school calendar. Sponsorship envelopes were sent out last term. There are great prizes for most laps (1 x boy & girl for each class) as well as prizes for the largest fundraiser in each class.

To be in the running for the largest fundraiser of your class, Lapathon envelopes must be returned by Tuesday 26th May. Once the envelope has been returned, the student will be given an icy pole voucher that can be redeemed at the end of that week.

Funds from this event will be allocated to the annual pledge of \$500 per class that the P&F has committed too.

HBF RUN FOR A REASON – Nate’s Mates

Our school team has been set up – **Whifford Catholic Primary School Nate’s Mates.**

When registering, select our school team. **Team entries close 11th May, 2015.**

<https://hbfrun2015.everydayhero.com/au/wcpsnatesmates>

The above link takes you to a page where you can **DONATE** to Nate’s cause. Nate’s story is on the fundraising page and details the struggles and courage shown by Nate and his family since last year. All donations are tax deductible.

So get on board, tell all your family and friends to join our team (we would love to win largest school team again) and support Nate in achieving his dream of playing Auskick and cricket with his friends.

Team caps are now available from the uniform shop or contact Pina if you are not able to get to school on a Thursday. Cost is \$7, with all profits going to Nate.

If you have any queries or are having trouble with the entering / donating please contact Pina on 0408 350 332.

SCHOOL COMMUNITY BUSINESS DIRECTORY

A copy of the WCPS Business Directory will be sent home to each family this week, so look out for your copy.

Term 3

Return of Cadbury Chocolate Fundraiser

Quiz Night (date tba)

Term 4

13th November – Freaky Friday Fete Night

Other Fundraising Events

Term 2

Cadbury Chocolate Fundraiser

Mother's Day Stall

Disco – Fluro theme

Term 3

Kids Card Design

First Aid Kit Fundraiser

Father's Day Stall

Term 4

TBA

MOTHER'S DAY STALL & RAFFLE

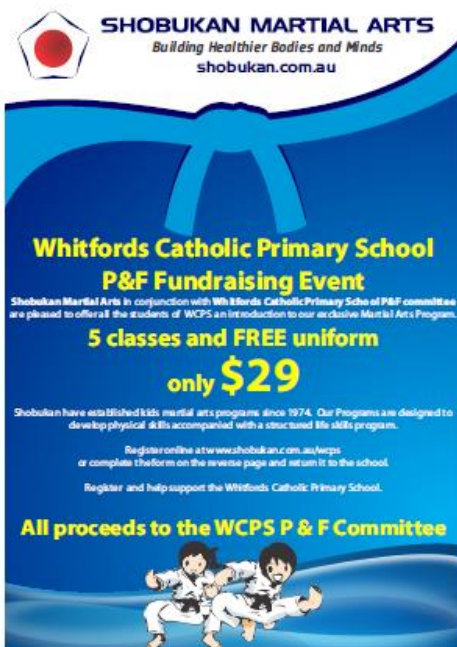
The Mother's Day Stall will be set up outside the school office on the mornings of Wednesday 6th and Thursday 7th May. The children will be able to purchase small gifts for their special mum, grandma, etc. Prices from 50c to \$5.

A local artist has also donated a framed original pastel painting, 'Thomas River Esperance' for Vincent to raise funds for his Homeless Project. The painting is in the school office for viewing and Vincent will be selling tickets each morning this week and next. Tickets are \$2 or 3 for \$5. Raffle will be drawn Friday 8th May and would make a lovely Mother's Day present. It is valued at \$500.

ENTERTAINMENT BOOKS

Entertainment books will be sent home 14th May. If you do not want to receive one please return the 'Opt Out' slip back to the office (via the classroom box) by 8th May. The P&F receives \$13 from each book sold. Any queries please contact Ines on 0448 800 471.

SHOBUKAN MARTIAL ARTS



LOOK OUT FOR THE FLYER COMING OUT THIS WEEK

Shobukan Martial Arts are offering all WCPS students **5 classes plus a FREE uniform for only \$29.**

All proceeds go directly to WCPS P&F Association.

Shobukan has centres at Whitfords, Wangara and Joondalup.

You can register online <http://shobukan.com.au/wcps/>

Or complete the back of the flyer that will come home this week.

Any queries please speak to Nadine.

VINCENT'S PROJECT FOR THE HOMELESS

Vincent is set to reach his target of 500 packs for the Homeless this year, so lots of volunteers will be required on packing day, Friday 22nd May. The packs will be put together from 3:30pm in the school hall. All are welcome, but younger children will need adult supervision.

This year we are hoping to set up a checking station, so if any parents (or high school siblings that need to complete community hours) are available, please come on the day. Also, if any parents are able to help transport all the items (that is, at least 500 of each of the 18 items) from Vincent's home to the school hall on that morning (straight after school drop off) could you please let Pina know.

More Important News

Agenda Items for Monthly P&F Meetings

Prior to each monthly meeting, the P&F will call for any agenda items that the school community wishes to be discussed. Parents who are passionate about helping to build a strong parent community at our School are encouraged to attend these meetings. If you are unable to attend please provide a committee member with details of any issues you would like raised.

Thank you for your support and we look forward to seeing you at some of the upcoming events.

The next P&F meeting will be on Wednesday, 20th May at 7:30pm. All are welcome.

Kind Regards

The Whitford Catholic Primary School P&F Committee